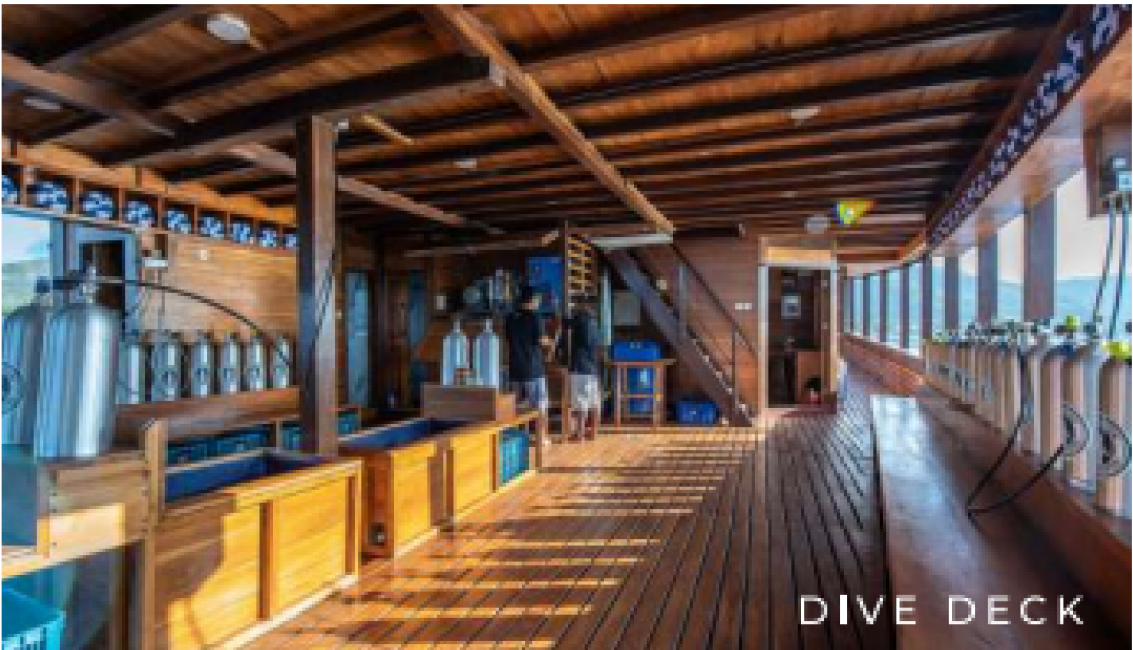
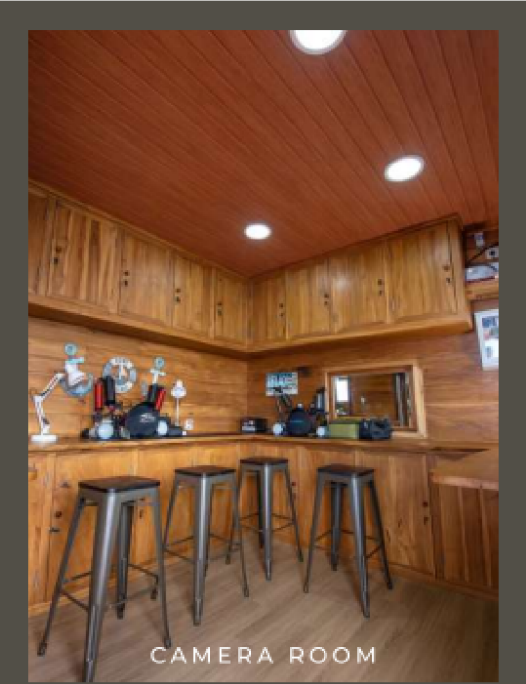


Book your slot now: +65 9022 5552 

**11-18 NOV 2024 (8D7N)**  
**RAJA AMPAT WAYAG**  
**FULL BOARD PACKAGE**  
**TWIN SHARING CABIN**  
**LOWER DECK: SGD 3899 / PAX**  
**+ USD 150/PAX ENTRANCE FEE**

SEA  DIVE   
**TRACEL** PTE LTD TA: 02831  
**SEA DIVE TRAVEL PTE LTD**  
20 Upper Circular Road #B1-20/21  
The Riverwalk Singapore 058416

# THE RAJA LOB 02



**Contact us:**  
+65 6557 0016 (Office)  
+65 9022 5552 (WhatsApp)

**BOOK NOW**

**Visit our website**  
[www.seadivetravel.com](http://www.seadivetravel.com)



# PACKAGE

## Included

- Roundtrip airport transfers
- Meals, unlimited tea, coffee and drinking water
- 3-4 dives/day (depends on sea condition and dive skill)
- Weight, belt, tanks and air refill
- Accommodation with air condition rooms
- Certified dive master ration 1:4
- Compressor, air fills 3000psi or 200 bar, tanks and weight belt
- Paddle board & banana boar
- Snorkeling equipment

## Excluded

- Land hotel if your arrival is a day before boat departure
- Dive gear
- Nitrox
- Port And entrance Fee
- Dive insurance
- International/domestic air ticket
- Hotel on land (if needed)
- Soft drinks and alcohol
- Gratuities to guides and crews
- Mobilization

### **Dive Equipment Rental (Per Trip)** **\*Special Package Price, please check with us**

**If you have not used your equipment for an extended period of time, we offer a FREE professional factory certified check to determine whether your equipment is safe or in need of a full service before your trip.**

#### **Contact us:**

+65 6557 0016 (Office)  
+65 9022 5552 (WhatsApp)

#### **Visit our website**

[www.seadivetravel.com](http://www.seadivetravel.com)

# ITINERARY

\*Strongly advised to arrive Sorong a day before boat departure in case of a flight delay. You may book your own hotel for the night or should you need our assistance, we can help you with the booking. Our operations side will either pick you up from the airport to your hotel OR from your hotel to the boat the next day.

**Day 1 (11/11/24, Mon)** Arrival SOQ (Sorong) 06:30am – 09:00am sail to Matan Island for check dive -/+ 2 hours, then sail to Misool Island. Please take the first flight to arrive on time. If anything happens to the flight, it is to be covered by your insurance. You will then have to take a ferry to catch up with the boat as the boat is not able to wait. Ferry is about USD 20 and the catch up will take about 2 hours to meet them at another port.

## **Flight Routes:**

- **10/11/24, Sun: From Singapore to Jakarta.**
- **11/11/24, Mon: From Jakarta 01.10am (first flight Batik or Garuda Airlines) direct to Sorong (SOQ), arrival around 6.10am or 6.20am.**

**Day 2 (12/11/24, Tue)** Penemu Island is full activity **2 - 3 dives**/snorkeling. Trekking to Pianemo in the afternoon. During the trip to Pianemo, it is like infinite endless blue ocean. Several times we could see silhouette green hilly island, virgin forests, and birds swooping fly doing fish hunt. After trekking we continue to sail to Wayag for -/+ 15 hours.

**Day 3 (13/11/24, Wed)** Aljui Bay, **4 dives**. We are focusing in this area. This area well known for its pearl farm. Diving around Aljui offers a great muck dive and if you lucky we can observe the walking sharks as it is very common in this area.

**Day 4 (14/11/24, Thu)** Wayag, **1 - 2 dives**/snorkeling. After morning dive continue exploring Wayag by Sekoci then to afternoon trekking. Sailing back to Tanjung Putus/ Yanggefo (Gam island) -/+ 14 hours.

**Day 5 (15/11/24, Fri)** Yanggefo, do **2 morning dives**/snorkeling then move to Arborek Island -/+ 1 hour **continue dive**/snorkeling in Arborek jetty and Manta Sandy.

**Day 6 (16/11/24, Sat)** Mioskon and Mansyur. **4 dives**/snorkeling in a day. Divers might see Schools of Yellow Snapper, Napoleon Wrasse, big groupers and many Wobbegong sharks can be found in Mioskon. Pigmy seahorses, different species of nudibranch can be seen as well. Being relatively shallow it makes for a good snorkel too.

**Day 7 (17/11/24, Sun)** Cape Kri /Mansuar Island. **2 dives**/snorkeling in the morning. Visiting Pasir Timbul depends on high and low tide. Sail back to sorong 1/+ 9 hours.

**Day 8 (18/11/24, Mon)** Mina Harbour, Sorong. 9am; check out after breakfast, farewells, and transfer to Sorong airport. Many thanks and see you again in another destination.

\*Note: All times in this itinerary are estimates only. Times, dive sites and number of dives can change, depends on the weather condition, dive skill, and special request or circumstances.



# THE RAJA LOB 02 CABINS

Equipped with eight stylish bedrooms, consists of two Double bedroom and six Twin Bedroom, complete with bathroom and wash basin in each bedroom. Those are all designed compact and dynamic to make your stay more comfortable.



UPPER DECK  
TWIN SHARING  
CABIN



LOWER DECK  
QUAD SHARING CABIN



LOWER DECK  
TWIN SHARING  
CABIN

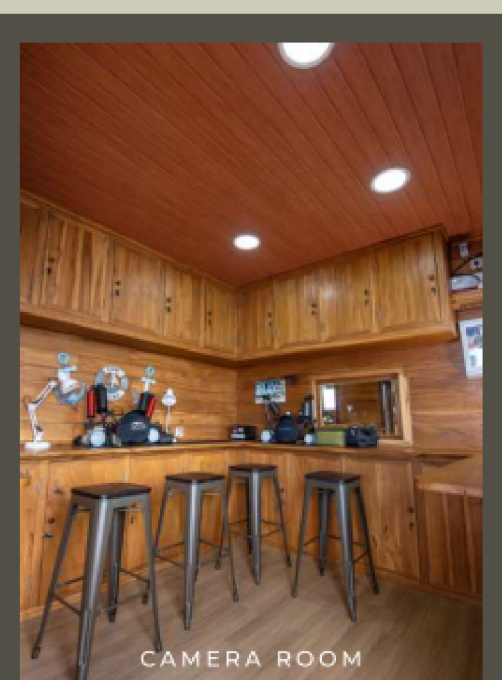
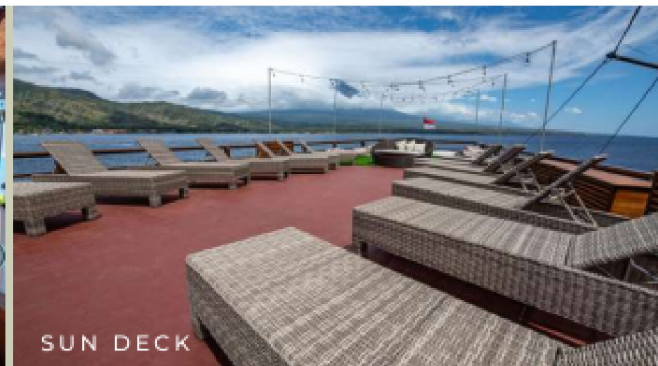
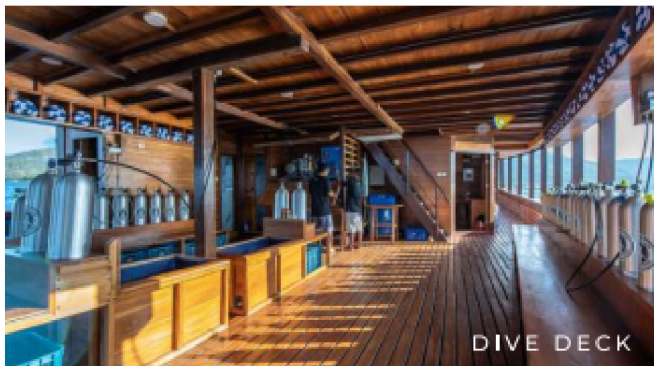


**Contact us:**  
+65 6557 0016 (Office)  
+65 9022 5552 (WhatsApp)

**Visit our website**  
[www.seadivetravel.com](http://www.seadivetravel.com)



# OTHER FEATURES THE RAJA LOB 02



**Contact us:**  
+65 6557 0016 (Office)  
+65 9022 5552 (WhatsApp)

**Visit our website**  
[www.seadivetravel.com](http://www.seadivetravel.com)

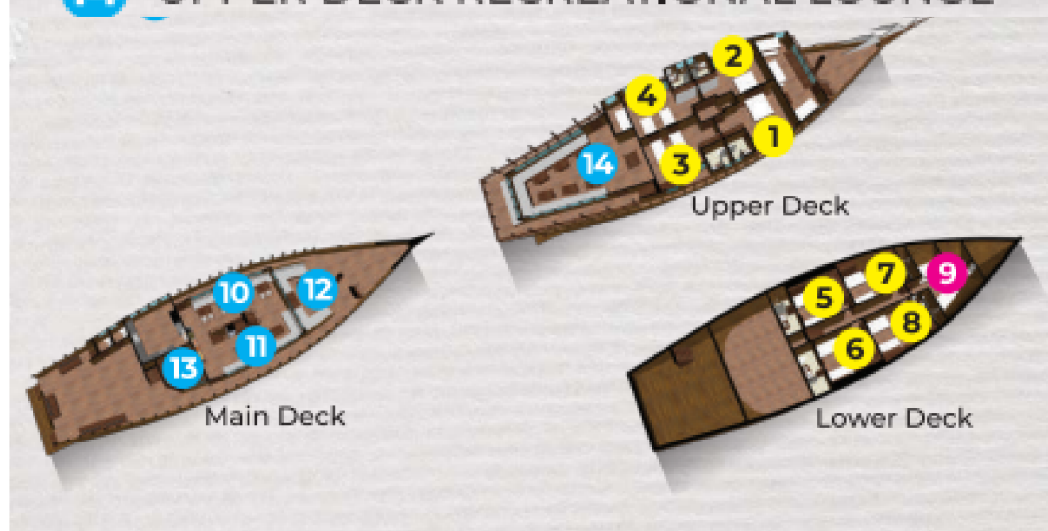


# BOAT SPECS

## THE RAJA LOB 02

|                     |   |
|---------------------|---|
| Dimension           | : L 35m x W 9m  |
| Year Built          | : 2022  |
| Speed               | : 6-7 knots   |
| Boat Materials      | : Ironwood & teak   |
| Engine              | : Nissan 10 cylinders (440 HP)  |
| Generators          | : 2 unit Mitsubishi 85 KWH+<br>1 unit Mitsubishi 43 KHW   |
| Water Tank Capacity | : 40 Ton  |
| Water Maker         | : 9 Ton per day   |
| Electricity         | : 2 x 85kva + 1 x 35kva   |
| Max Guests          | : 20 adults   |
| Number of Crews     | : 18  |
| Cabins              | : 8 AC twin sharing cabins<br>with private bathroom &<br>1 quad sharing cabins with<br>private bathroom |

- 1 UPPER DECK TWIN SHARING CABIN  
(Convertible to Double Bed)
- 2 UPPER DECK TWIN SHARING CABIN  
(Convertible to Double Bed)
- 3 UPPER DECK TWIN SHARING CABIN  
(Convertible to Double Bed)
- 4 UPPER DECK TWIN SHARING CABIN  
(Convertible to Double Bed)
- 5 LOWER DECK TWIN SHARING CABIN
- 6 LOWER DECK TWIN SHARING CABIN
- 7 LOWER DECK TWIN SHARING CABIN
- 8 LOWER DECK TWIN SHARING CABIN
- 9 LOWER DECK QUAD SHARING CABIN
- 10 MAIN DECK INDOOR DINING HALL
- 11 MAIN DECK LIVING HALL
- 12 MAIN DECK OUTDOOR COMMON AREA
- 13 MAIN DECK CAMERA ROOM
- 14 UPPER DECK RECREATIONAL LOUNGE



### Contact us:

+65 6557 0016 (Office)  
+65 9022 5552 (WhatsApp)

Visit our website  
[www.seadivetravel.com](http://www.seadivetravel.com)



## 1.Payment Terms

- Deposit (non-refundable): 50% on confirmation.
- Balance Payment: 90 days before departure date.
- All payment must arrive on full amount as it stated in the invoice.

## 2. Cancellation Policies

- All cancellation made will applied with fees as listed below:
- Initial deposit is none refundable.
- 120 – 90 days prior to the trip departure 50% of the payment is forfeited.
- Less than 90 days, 100% payment is forfeited and no refund is available.
- After a deposit is received, cancellations and/or reservation changes must be in writing and are subject to a SGD 150 handling fee.

## B. Cancellation Policies without force major / personal reason

- Deposit is not refundable.
- 180 days to 91 days to the departure 50% deposit is none refundable.
- 92 days to the departure date 100% none refundable.
- After a deposit is received, cancellations and/or reservation changes must be in writing and are subject to a SGD 150 handling fee.

## 3. Cancellation made by the operator

- The operator reserves the right to cancel the trip for reasons that are unavoidable and will inform the costumer at the earliest possible date.
- The operator reserves the right to cancel a booking if actions on the costumer's part give justifiable cause to do so. In such instance the operator will refund any payments already made to the operator.
- In the event of the cancellation, the operator will not be responsible for additional expenses incurred by trip members. If the operator deems it necessary to change an itinerary during a trip, and the trip is adversely affected, then the operator will refund the differences between the agreed tour prices and the services actually provided.

## 4. Disclaimer

- The operator will not be responsible for weather, sea, or road condition affecting the cruise and causing delays or re-routing, sickness, government action, and changes due to the force of majeure. The operator will not be responsible for any lost or damage of the guest's personal belongings.

## 5. Insurance

- Every effort is made to ensure you have a safe trip aboard the LOB, but it is **HIGHLY RECOMMENDED** to the costumers to purchase travel insurance, medical insurance, dive insurance, baggage insurance and trip cancellation insurance.

## 6. Full Boat Charter

### Terms and Conditions

All Scheduled cruises can be booked as full boat charters, with maximum passenger 16 persons. There are certain changes to the scheduled itineraries allowed for the chartering customer subject to prior arrangement and approval by the operator. However the scheduled period of nights and ports of embarkation and disembarkation cannot be altered. Full boat charter for unscheduled destination and itineraries: If the charter is booked to sail outside the cruise itinerary or to another area, then a re-location fee may need to be added to the total cost of the cruise depending on location.

## 7. Force Majeure and Unpredictable Act Of Man

The operator reserves the right to reschedule a trip for reasons of Force Majeure (i.e. natural disaster, pandemic etc) or unavoidable acts of man (i.e. war, riots, strikes etc). In the event of this happening the operator will advise you at the earliest possible date to reschedule or refund based on the date.

## 8. Medical

In case of a medical problem arising during the voyage, either onboard or on shore, which results in costs for evacuation, use of aircraft or repatriation, the responsibility for payment of these costs belongs solely to the passengers. Passenger should report he/she medical repot before onboard.

## 9. General Information

- Itineraries are subject to change due to sea and weather conditions, availability of sea anchorage, government regulations and other factors.
- Any amendments and additions to the present contract shall be valid only when they are made in written form and duly signed by both parties.
- In any condition like economic situation of Indonesia especially for the significant increase of fuel, taxes, currency fluctuation and any other related factors, the operator is reserve the right increase the price even after the contract has been drawn.
- Trip has paid deposit will not charge fuel surcharge or extra payment. The fee will follow the invoice has made.

## Contact us:

+65 6557 0016 (Office)  
+65 9022 5552 (WhatsApp)

**Visit our website**  
[www.seadivetravel.com](http://www.seadivetravel.com)